

Outreach and Support for Families Beyond the Clinical Setting

Katie McCarthy, MBA, CPACC

Outreach and Support Services Coordinator

2024 Early Hearing Detection and Intervention (EHDI) Conference

Denver, CO




Boston Children's Hospital

Deaf and Hard of Hearing Program

- Financial disclosure:
Salaried employee
- Nonfinancial disclosure:
None


Throughout this presentation, the word *deaf and hard of hearing* is an umbrella term that defines anyone who may be:

- d/Deaf cochlear implant users
- DeafBlind hearing aid users
- Deaf + BAHA users
- Deaf Disabled spoken and/or ASL users
- Hard of hearing intersectional
- Late deafened



The Deaf and Hard of Hearing Program at Boston Children's Hospital provides comprehensive evaluation and consultative services to d/Deaf and hard of hearing babies, children and adolescents.

Our interdisciplinary program is located within the Department of Otolaryngology and Communication Enhancement and is one of the largest and most experienced programs dedicated to d/Deaf and hard of hearing children.





Early identification of hearing levels is an essential component to maximizing language access for children who are d/Deaf and hard of hearing. Our interdisciplinary team* will assess a child's language and developmental status and subsequently assist families to create a roadmap that emphasizes communication, language proficiency, and social-emotional well-being.

Our team collaborates with physicians, allied health professionals, and educators to meet the needs of your child.

**Includes audiology, education and outreach, psychiatry, psychology, and speech-language pathology*

Philosophy of Care

- Our team is dedicated to equitable and evidence-based care.
- We collaborate closely with physicians, allied health professionals and educators
- Most clinicians are bilingual and bicultural with spoken English and American Sign Language
- We value a whole child approach and strive to provide a full range of opportunities for families.



Hospital-wide readiness and awareness

- Interdisciplinary and/or department-wide training on caring for d/D/HH/DB and Deaf Plus patients
- ASL classes for faculty and staff
- Adaptative Inclusivity Committee

Information about our program

<https://www.childrenshospital.org/dhhp>

- Overview
- Conditions and Treatments
- Meet Our Team
- Programs & Services
- Your Visit
- Patient Resources
- Research and Innovation
- Contact us

The screenshot shows the 'Contact Us' page for the Deaf and Hard of Hearing Program. On the left, there is a sidebar with contact information: 'Contact the Deaf and Hard of Hearing Program' (781-216-2215) and 'Fax' (781-216-3688). Below this are buttons for 'Request an Appointment' and 'Request a Second Opinion'. A blue box identifies the 'Department of Otolaryngology and Communication Enhancement'. The main content area features a 'Listen' button, a paragraph describing the program's services, a paragraph about early identification, a paragraph about the outreach program, and a list of the interdisciplinary team including audiology. A chat icon is visible in the bottom right corner.

Contact Us

Contact the Deaf and Hard of Hearing Program
781-216-2215

Fax
781-216-3688

Request an Appointment

Request a Second Opinion

Department of Otolaryngology and
Communication Enhancement

Listen

The Deaf and Hard of Hearing Program at Boston Children's Hospital provides comprehensive evaluation and consultative services to D/deaf and hard of hearing children. Our interdisciplinary program is located within the [Department of Otolaryngology and Communication Enhancement](#) and is one of the largest and most experienced programs dedicated to D/deaf and hard of hearing children.

Early identification of hearing levels is an essential component to maximizing language access for children who are D/deaf and hard of hearing. [Our interdisciplinary team](#) will assess a child's language and developmental status, and subsequently assist families to create a roadmap that emphasizes communication, language proficiency, and social-emotional well-being. Our team collaborates with physicians, allied health professionals, and educators to meet the needs of your child.

Furthermore, the Deaf and Hard of Hearing Program has a dedicated outreach program that aims to organize D/deaf and hard of hearing resources and community-based events, foster relationships that promote acceptance of one's identity regardless of language or technology, and empower D/deaf and hard of hearing individuals.

The outreach program provides support to children and their families outside of the clinical scope. We make referrals to other local and national agencies and organizations, disseminating information regarding assistive devices, educational materials, and specialized materials. We interact closely with schools, organizations, and agencies to ensure we are caring for the whole child.

Our interdisciplinary team includes:

- audiology

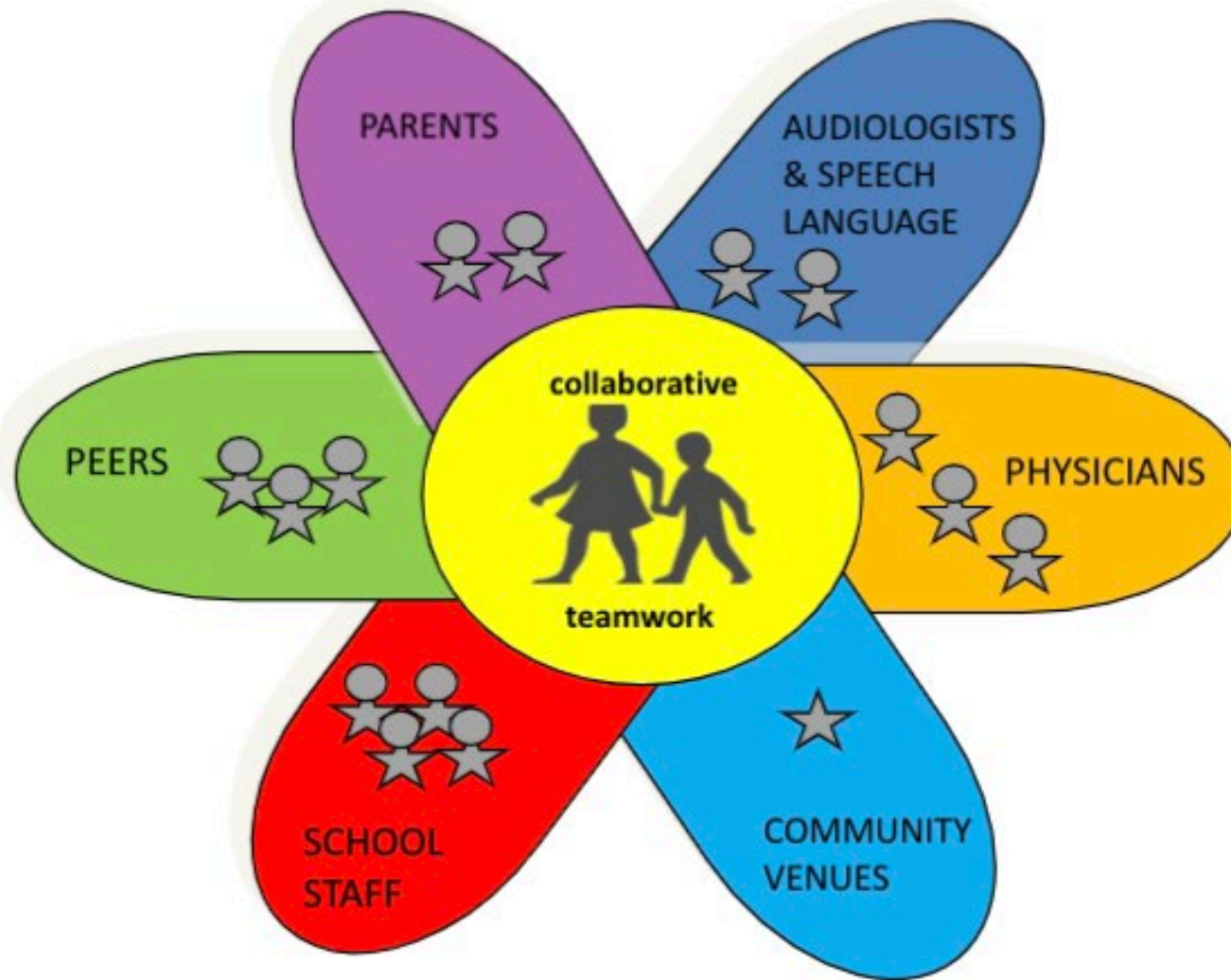
Outreach and Support Services Program: supporting families beyond the clinic

Funded through:



Boston Children's Hospital
Deaf and Hard of Hearing
Program





The outreach and support services program reaches out to over 1,000 families and 600 professionals on our list

Approximately 700-800 adults and children utilize our outreach programming each year

The outreach program started in the mid-2000s with funding through The Caroline Bass Fund



Katie McCarthy

Outreach and Support Services Coordinator



Kellye Greer

Family Connections Specialist



The outreach model consistently tries to ensure:

- belonging not just inclusion
- language-rich experiences in natural settings
 - parent networking
- best-informed practices and resources for parents, educational staff, and clinicians
- understanding what it's like to raise a d/D/HH child from other parents and Deaf individuals
- collaborations with clinicians, colleagues, and community venues in making programs and services successful and ongoing



Family centered-events

- *Family-centered outings to public venues*
- *Community Learning for Kids*







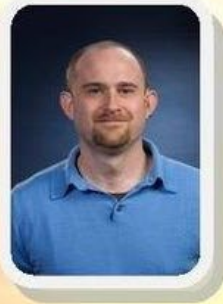
Boston Children's Hospital
Deaf and Hard of Hearing
Program Outreach and Support Services

DHHP Parent Series Workshops

Educational workshops for families

- *DHHP Parent Series Workshops*
- *Am Early Evening with..*
- *Informative workshops related to clinical needs, outreach, and parental support*
- *“Ask an Audiologist” virtual coffee chats*

presents
a speaker series for parents and professionals
an Early Evening with ...
...nell, MPA and Katie McCarthy, M



...stilling Self-Advocacy in Children: ...egies and Tips for Positive Outcomes

...raised in Massachusetts, attending the Clarke School for the Deaf until mai...
He has a bachelor's degree in journalism and master's in public administrat...
...currently works at Worcester Polytechnic Institute as Assistant Director of...
...involved in service to the deaf community, serving for five years as president of...
...the Alexander Graham Bell Association for the Deaf and Hard of Hearing and...
...ed with HLAA and MCDHH. He is passionate about self-advocacy and lead...
...where he has focused most of his public service efforts. He is a profoundly...
...plants.

...born and raised in San Diego, California, and mainstreamed in the public sc...
...or's degree in creative writing and a master's in business administration. S...
...hospital as Coordinator of Outreach and Support Services for DHHP, and is...
...y and Framingham State University. She was previously involved with Fam...
...af mentor. She is a profoundly Deaf signing adult.

*Navigating
allenges with
Listening
gue in School*



Presenters:

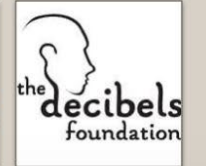
Charlotte Mullen,
AuD, Specialty
Audiologist for
Clinical Education



Yoav Shimoni, PsyD,
DHHP Post-Doctoral
Fellow

workshop series is made possible through

Boston Children's Hospital
Deaf and Hard of Hearing
Program



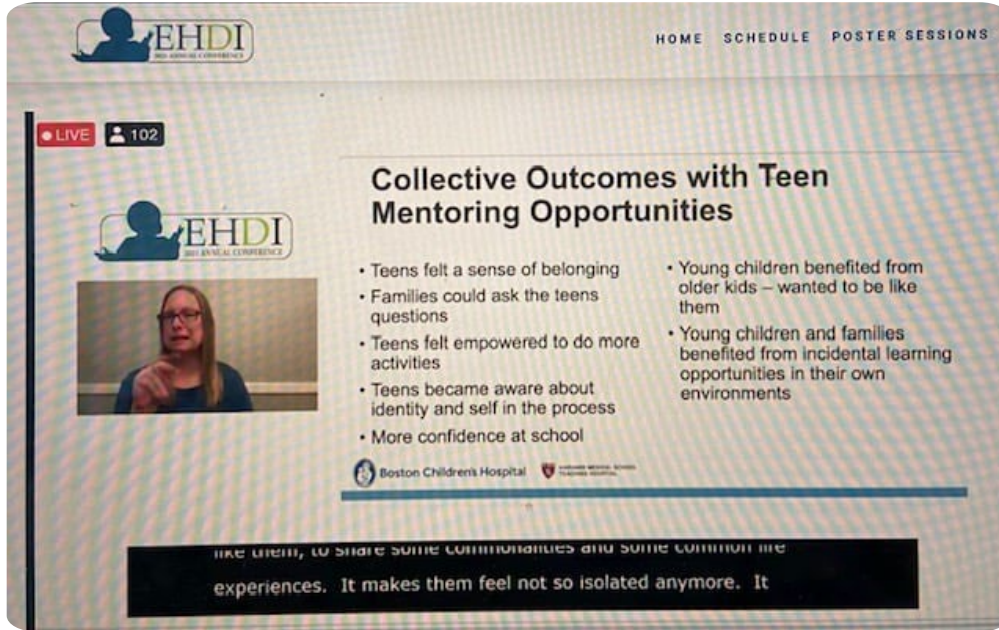
Circle the date

October 1, 2022

7:30 - 8:30 p.m.

E-mail

katie.mccarthy@childrens.harvard.edu
to RSVP and receive the Zoom
You may either call into the me
or participate via video. The
presentation will also be recor
and archived.



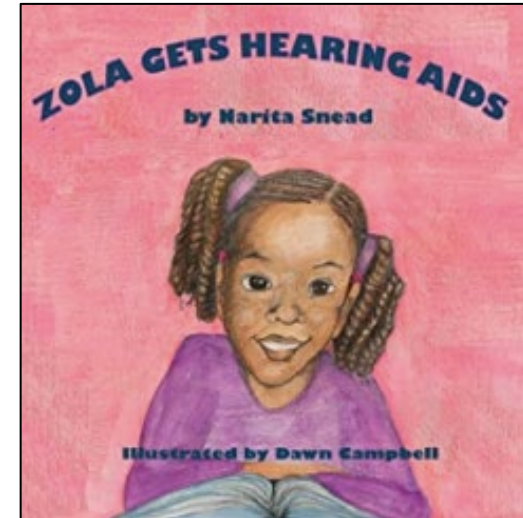
Collaborations, education and training

- *Collaboration with early intervention programs and services*
- *Collaborations with public venues and ensuring equal access*
- *Cultural Connections classes with families*



Informative resources for families

- *Biweekly and monthly resources*
- *List of early intervention resources*
- *Guidelines for Educational Planning**
- *Setting Language in Motion**
- *Informative tip sheets**
- *Books and magazines*
- *Camps for D/HH children*
- *Information about IEPs/504s and advocacy*



Setting Language in Motion

Family Supports and Early Intervention for Babies Who are Deaf or Hard of Hearing

Available in American Sign Language and spoken English



FREE seven self-paced, on-line modules



* developed by the Deaf and Hard of Hearing Program. The materials are available on our web site.

Family Education and Advocacy Team (FEAT)

Collaborative team effort between Audiology, Cochlear Implant, and DHP staff to offer resources for families going through the transition process from preschool to college.

Workshops we offer year-round:

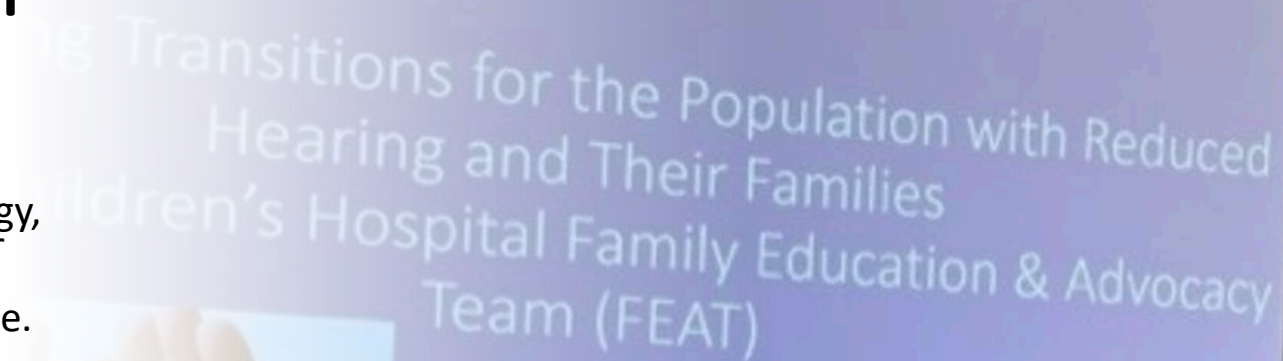
Early intervention to preschool

Elementary school to middle school

Middle school to high school

High school to college

Professional Development



Supporting Transitions for the Population with Reduced Hearing and Their Families
Children's Hospital Family Education & Advocacy Team (FEAT)

ASHA, 2023
Boston, MA

Where the world comes

The outreach program continues to create more visibility within hospital systems

- The importance of a Deaf/Hearing team
- Family and clinical support
- Departmental trainings and presentations



We hope other hospitals will create outreach programs similar to ours

Benefits of the outreach program

- provide insight, advice and guidance
- provide resources
- provide real-life experiences
- provide early language acquisition
- help families learn self-advocacy tools for their child
- help their child learn self-advocacy tools

Benefits of the outreach program

- help people recognize the positivity of “Deaf Gain”
- help people recognize and prevent the harm that come with audist and ableist behavior
- provide natural interactions which lead to less “separation” mentality

Benefits of meeting other families and/or d/D/HH role models through our outreach program

The ability to imagine what life may look like for their deaf child as they grow up

Accurate representation

The sense of belonging

Knowing their child will be supported

Development of identity and self

Knowledge of services and advocacy tools for school so families or their child can ask the right questions

Tips for families to be aware about resources and become involved with activities

01

Receive e-mail notifications and join Facebook pages.


Share social media feeds, books with d/Deaf characters, movies, online videos or web sites with your family members and with your child

02

Attend events. Meet other parents of d/Deaf children in your area who can help you navigate or share their experiences how they got started with meeting other Deaf people in their area

03

Reach out to educational programs for the deaf and see what they have planned within the next few months as far as events or gatherings



Where and how do I find other deaf role models and families in my area?

- State-run programs
- Outreach programs
- Extended school programs
- Social opportunities and events
- Alumni of your child's school
- Online "meet and greets" or panels
- Nationwide organizations

By having access to d/Deaf /HH role models and other families,

- families are more likely to feel less stress, are more involved in their child's schooling, and are more likely to embrace Deaf culture and participate in Deaf community events, which gives their child access to additional Deaf peers and adult role models
- children are more likely to achieve age-appropriate milestones

American Society for Deaf Children

Contact Information

Boston Children's at Waltham

9 Hope Avenue

Waltham, MA 02453

Phone: (781) 216-2215

Scheduling and general questions:
deaf.program@childrens.harvard.edu

Outreach: katie.mccarthy@childrens.harvard.edu

Web site: www.childrenshospital.org/dhhp

Facebook: <https://facebook.com/BostonChildrensDHHP>